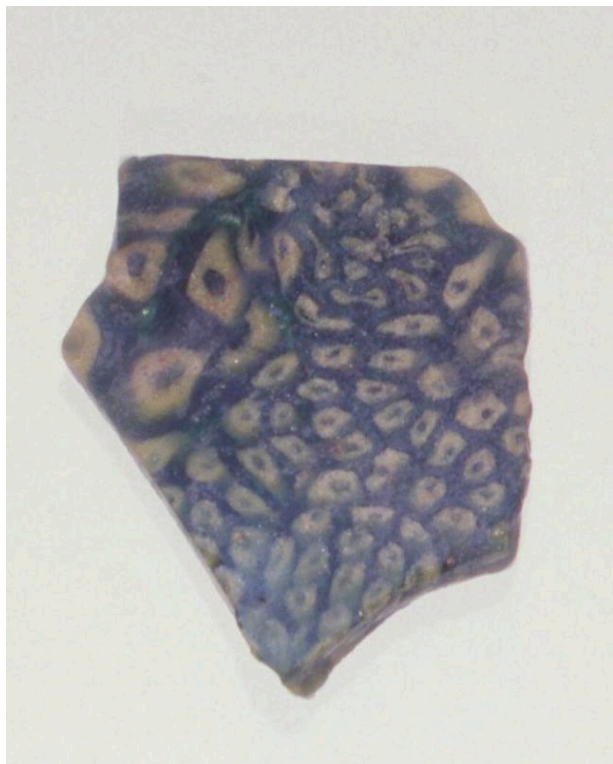


Basic Detail Report



fragment

Date

99 BCE-99 CE

Medium

Glass

Description

Fragment of a Plate or Bowl. Translucent green, bluish-green matrix with similar round canes cased with thick opaque yellow glass, all weathered; mosaic glass or millefiori technique. Body fragment of a plate or bowl preserving two concentric lathe-cut grooves on interior surface.

Dimensions

Overall L: 3.9 cm

Object number

51.1.235-6