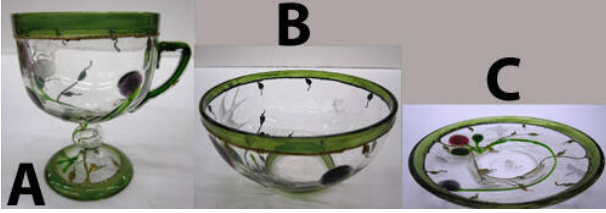


Basic Detail Report



tableware

Medium

Glass, Enamel, Gilding

Description

(A) Cup. Colorless and transparent red, green and purple; blown, tooled, engraved, applied and gilt. Cup with ball-knop stem. Conical foot and applied angular handle. Cup decorated with purple and red stemmed flowers, engraved beetle and butterfly and applied gilt vines. Signature engraved on bottom "Galle". (B) Bowl. Colorless and transparent red, green and purple; blown, tooled, engraved, applied and gilt. Bowl decorated with purple and red stemmed flowers, engraved beetles and bird and applied gilt vines. Signature engraved on bottom "Galle". (C) Plate. Colorless and transparent red, green and purple; blown, tooled, engraved, applied and gilt. Plate decorated with purple and red stemmed flowers, engraved beetles, dragonfly and butterfly and applied gilt vines. Signature engraved on bottom "Galle".

Dimensions

See Individual Records

Credit Line

Gift of Dorothy-Lee Jones

Object number

2011.3.173